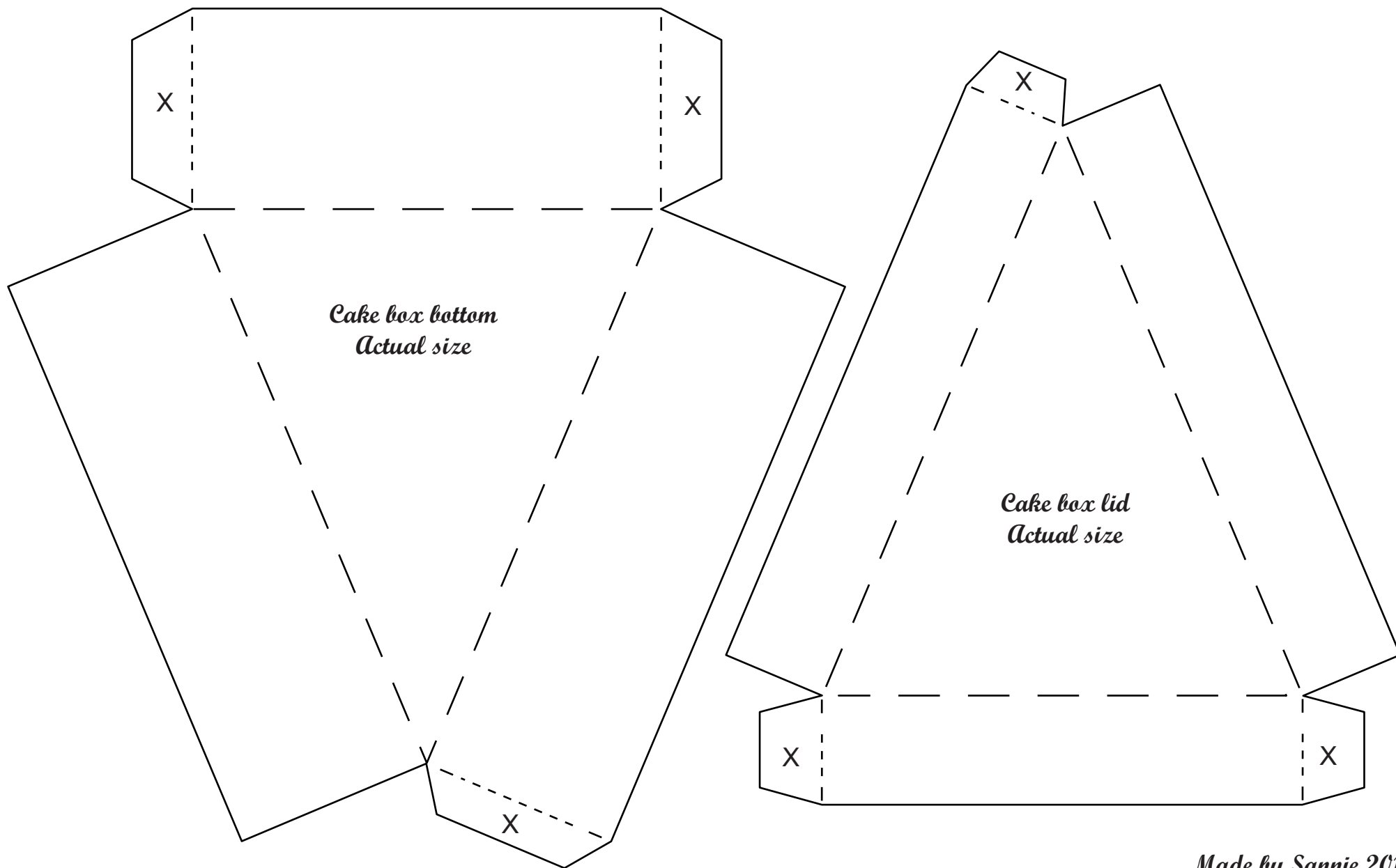


How to:

- 1) Print out the template
- 2) Cut it out (only the solid lines)
- 3) Trace it on to cardstock or other paper (optional)
- 4) Fold on the dashed lines
- 5) Glue the X marked tabs into position

Cake box with lid (Bottom)



How to:

- 1) Print out the template
- 2) Cut it out (only the solid lines)
- 3) Trace it on to cardstock or other paper (optional)
- 4) Fold on the dashed lines
- 5) Glue the X marked tabs into position

Cake box with lid (Top and middle)

